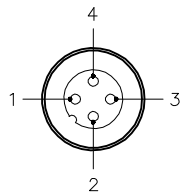


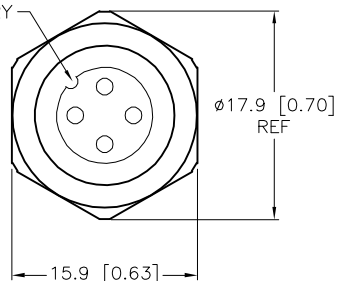
# MALE END VIEW



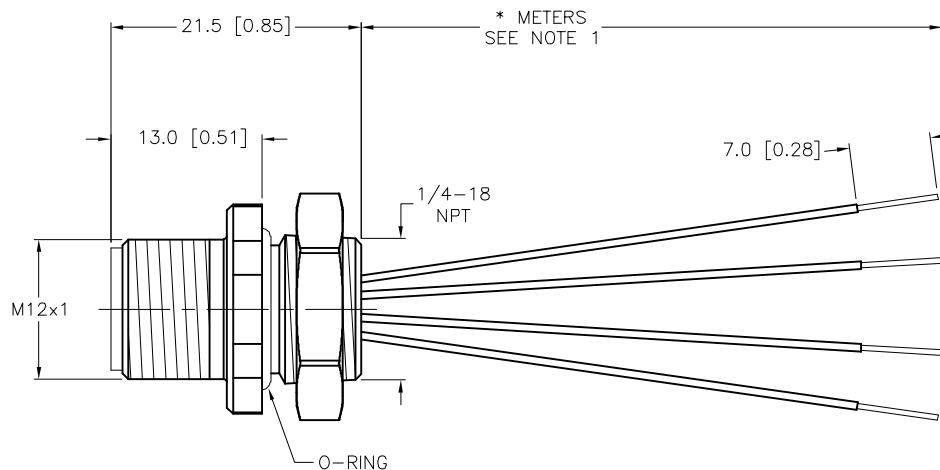
1 = BROWN  
2 = WHITE  
3 = BLUE  
4 = BLACK



KEYWAY ORIENTATION  
MAY VARY



END VIEW  
LOCKNUT REMOVED



## SPECIFICATIONS

|                               |                                   |
|-------------------------------|-----------------------------------|
| CONTACT CARRIER MATERIAL      | NYLON OR TPU                      |
| CONTACT MATERIAL/PLATING      | BRASS/GOLD                        |
| HOUSING MATERIAL              | BRASS/NICKEL                      |
| O-RING MATERIAL               | NITRILE                           |
| RATED CURRENT [A]             | 4.0 A                             |
| RATED VOLTAGE [V]             | 250 V                             |
| CONDUCTOR INSULATION MATERIAL | PVC                               |
| NUMBER OF CONDUCTORS [AWG]    | 4x22 AWG                          |
| TEMPERATURE RATING            | -40°C to +105°C (-40°F to +221°F) |
| PROTECTION CLASS              | MEETS NEMA 1,3,4,6P AND IEC IP68  |

| CABLE LENGTH                | TOLERANCE*  |
|-----------------------------|---|
| ALL LENGTHS                 | + 4% (OR 50mm) OF LENGTH<br>- 0% (OR 0mm) OF LENGTH<br>WHICHEVER IS GREATER |
| STRIP LENGTH                | TOLERANCE*  |
| 0-7mm                       | ±0.5mm  |
| 8-29mm                      | ±1.0mm  |
| 30-49mm                     | ±2.0mm  |
| 50-69mm                     | ±3.0mm  |
| 70-100mm                    | ±4.0mm  |
| OVER 100mm                  | ±5.0mm  |
| *UNLESS OTHERWISE SPECIFIED |   |

### NOTES:

1. "\*" DESIGNATES LEAD LENGTH IN METERS. CONTACT TURCK TO ORDER SPECIFIC LENGTHS.

SOURCE DRAWING - FOR REFERENCE ONLY

|                      |  |  |  |  |  |  |  |
|----------------------|--|--|--|--|--|--|--|
| RELATED DOCUMENTS    |  | 3RD ANGLE PROJECTION                           |  | <div>THIS DRAWING IS CONFIDENTIAL AND THE PROPERTY OF TURCK INC. USE OF THIS DOCUMENT WITHOUT WRITTEN PERMISSION IS PROHIBITED.</div> <div>TURCK</div> |  | 3000 CAMPUS DRIVE<br>MINNEAPOLIS, MN 55441<br>1-800-544-7769<br>(763) 553-7300<br>(763) 553-0708 fax<br>www.turck.us |  |
| 1.<br>2.<br>3.<br>4. |  |  |  |  |  |  |  |
| MATERIAL             |  | DRFT JBJ                                       |  | DATE 03/13/01  |  | DESCRIPTION<br><br>FS 4.4-*/18.25  |  |
| SEE SPECIFICATIONS   |  | APVD   |  | SCALE 1=.7   |  |  |  |
| FINISH               |  | UNIT OF MEASUREMENT<br><br>MILLIMETER [ INCH ] |  | IDENTIFICATION NO.   |  | REV<br><br>C   |  |
| SEE SPECIFICATIONS   |  |  |  |  |  |  |  |
|                      |  | DO NOT SCALE THIS DRAWING                      |  | FILE: 777000209  |  | SHEET 1 OF 1   |  |

|     |                              |    |          |         |
|-----|------------------------------|----|----------|---------|
| C   | ADD ENDVIEW & UPDATE DRAWING | NF | 01/12/16 | 53050   |
| REV | DESCRIPTION                  | BY | DATE     | ECO NO. |